

Orange Line Transformation

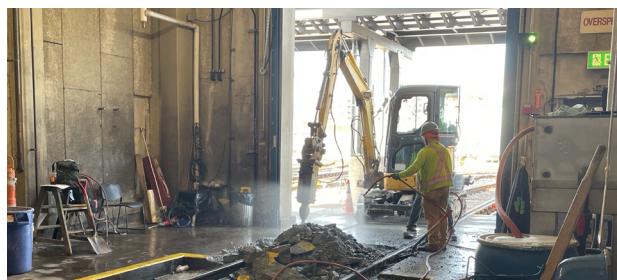
Construction Project Updates



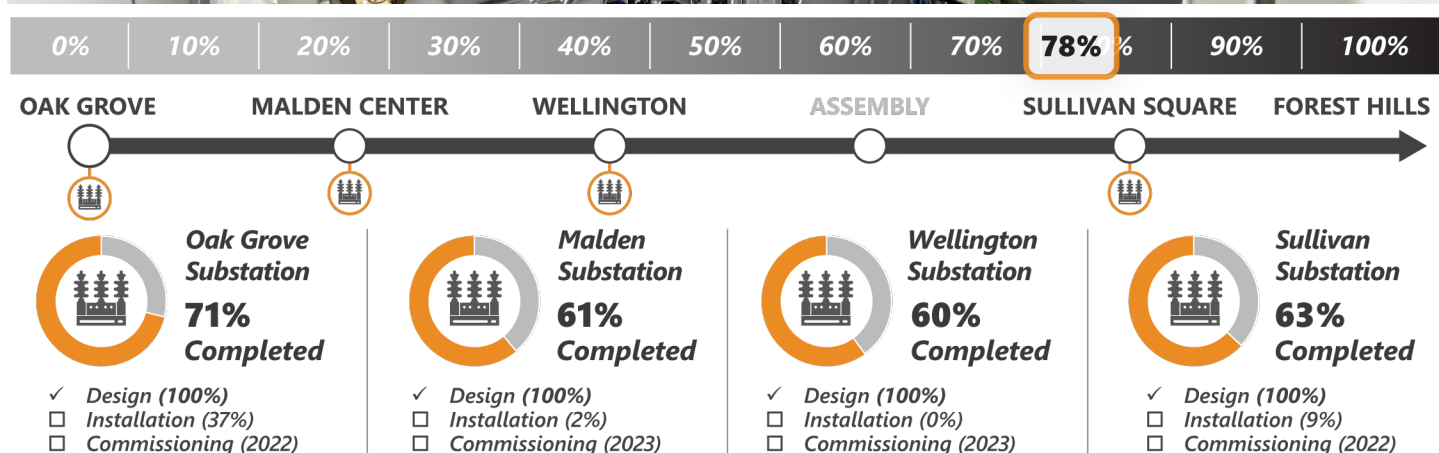
Week in Review and Lookahead

Friday, February 25, 2022

As we approach the end of February, work continues on the Wellington Yard and Maintenance Facility, the Traction Power Substations (TPS), and the signal system under the [Orange Line Transformation \(OLT\) Program](#). Read more about project progress below



Traction Power Substations



Traction Power Substations: Modernize the third rail power supply to reduce the risk of service disruptions; develop a power system capable of supporting additional Orange Line service

- ✓ **This Week** | Completed installation of SCADA communication infrastructure between Oak Grove traction power substation and Oak Grove Station platform communications room
- **Lookahead** | Continue verification of SCADA communications infrastructure and testing

Wellington Yard and Maintenance Facility Updates



0% | 10% | 20% | 30% | 40% | 50% | 60% | 70% | **83%** | 90% | 100%

21,895 Feet of Track



82%
Completed

69 Units of Special Track



80%
Completed

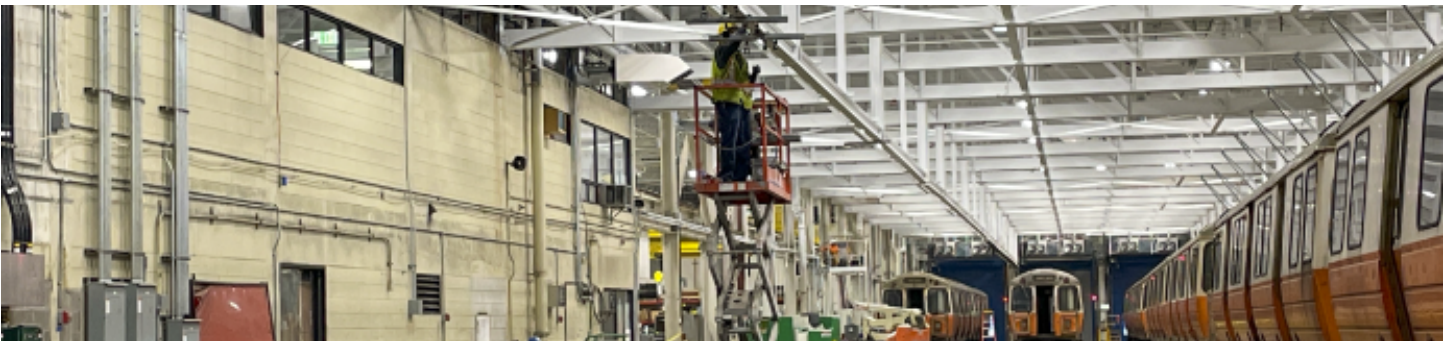
Traction Power & Signals



81%
Completed

[Wellington Yard:](#) Upgrade Wellington Yard to increase service capacity, replace outdated infrastructure, and enhance safety.

- ✓ **This Week** | Installed yard traction power, signal, and trackwork
- **Lookahead** | Prepare for next track outage in ladder track for Tracks 36-38 and North Yard. Complete storage tracks 31 & 32, signal and traction power reconstruction. Commence signal testing tracks 33-38



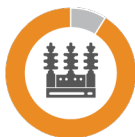
0% | 10% | 20% | 30% | 40% | 50% | 60% | 70% | 80% | **85%** | 90% | 100%

Building Upgrade



89%
Completed

Power Substation



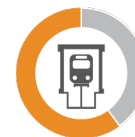
91%
Completed

Train Wash



80%
Completed

Maintenance Bays



60%
Completed

[Wellington Maintenance Facility:](#) Modernize the Vehicle Maintenance Facility to improve vehicle maintenance; reducing customer wait times, provide cleaner cars, and deliver safer operations.

- ✓ **This Week** | Completed painting over pit tracks and commenced punch list activities. Removed car wash tracks
- **Lookahead** | Install interior traction power system on track 13 and continue with car wash track demolition