



**Massachusetts Bay
Transportation Authority**

South Coast Rail Phase 1 Update

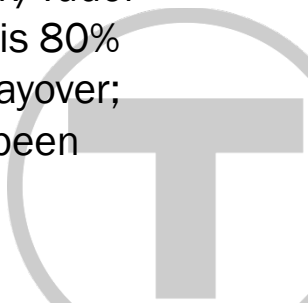
Fiscal and Management Control Board

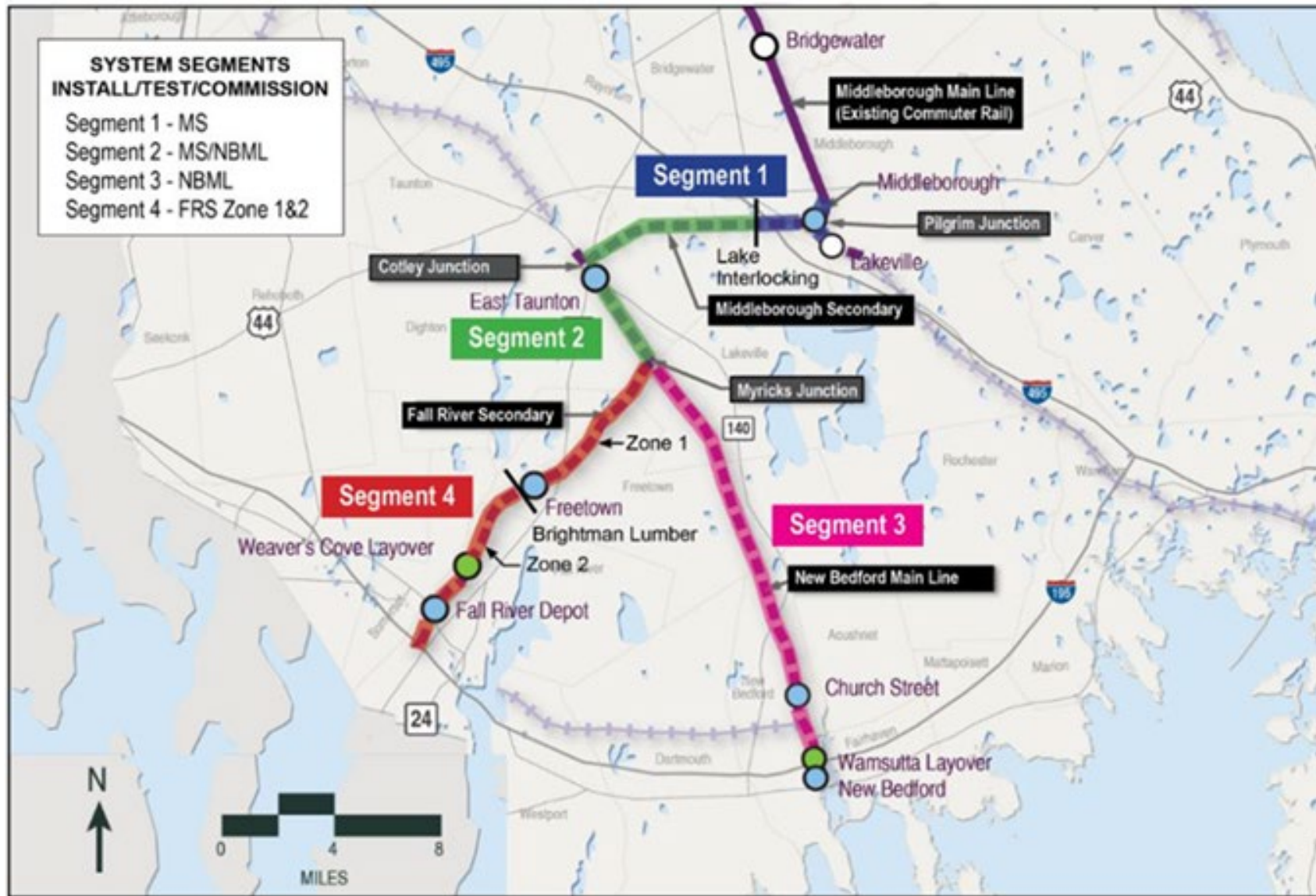
May 24, 2021

Jennifer Tabakin

Spring 2021 - Quarterly Update

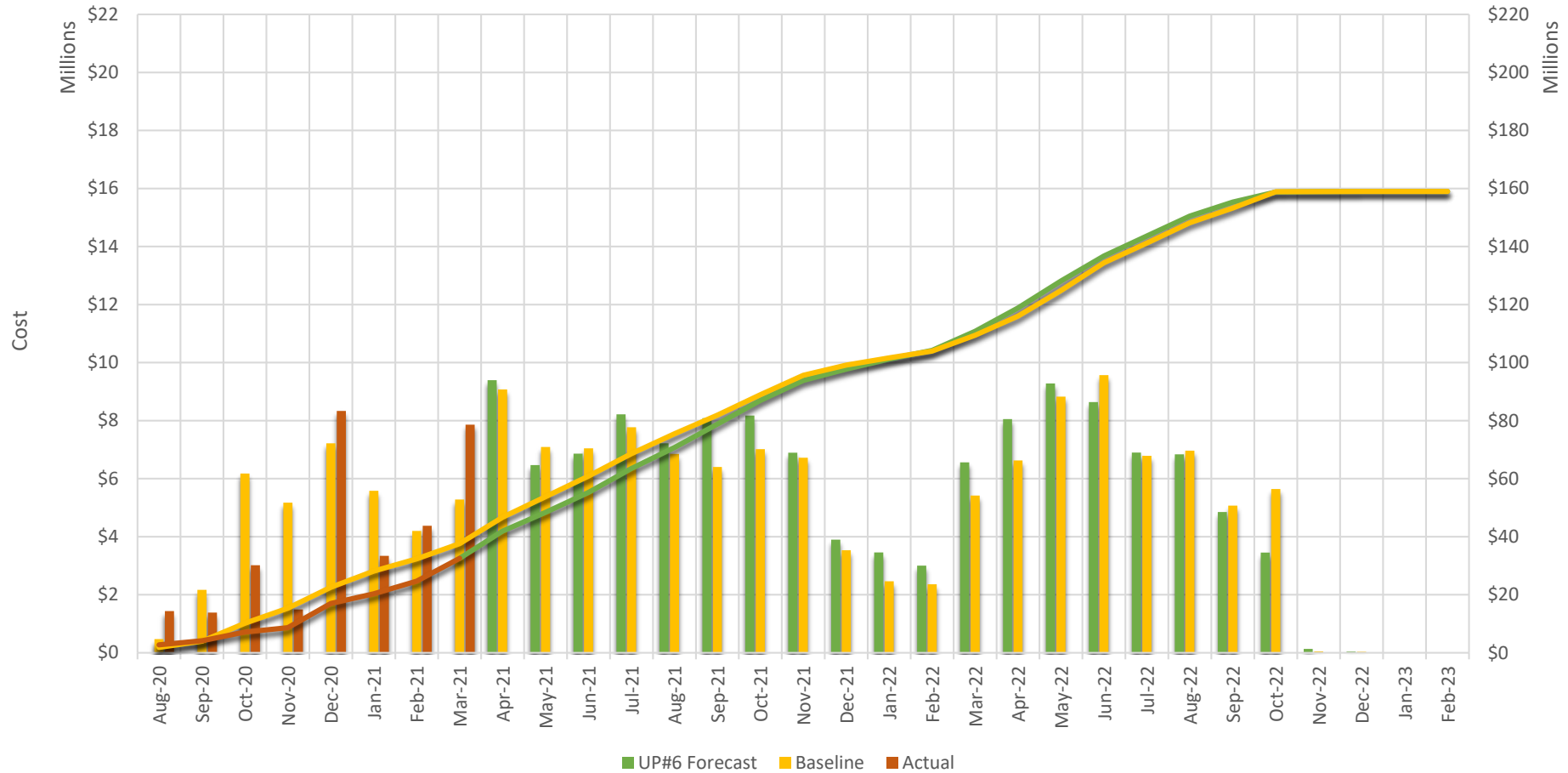
- ✓ **105 construction employees** working along the South Coast Rail Corridor; 8 crews of approximately 45 workers in total along the Fall River Secondary and 12 crews of approximately 60 workers in total along the Middleborough Secondary/New Bedford Main Line
- ✓ **\$27.2M of construction work** recently awarded for Route 24 bridge and traffic signals to Cardi Corporation.
- ✓ **\$562M of construction work** ongoing on the Fall River Secondary, Middleborough Secondary, New Bedford Main Line in two contracts:
 - Fall River Secondary (K78CN03) – \$158M, Skanska/D.W. White continues tree clearing which is 80% complete; 6,500 linear feet of sheet pile has been installed; 1,600 linear feet of soldier pile work has been completed; electrical foundation work at Weaver’s Cove has begun, 1,500 linear feet of track drainage has been installed along the Right-of-Way, and 3,400 linear feet of track has been completed as well as one turnout. 20% complete
 - Middleborough Secondary/New Bedford Main Line/Signals (K78CN04) – \$403M, SCR Constructors (Middlesex/Tudor Perini) continues installation of drainage and water systems at Middleborough Station/Pilgrim Junction, which is 80% complete; 75% of the early action stockpiled soils have been transported from the Right-of-Way to Wamsutta Layover; excavating and grading at Middleborough and East Taunton Stations is 80% complete, 5% of sheet piles have been installed, 2% of track work has been completed and cable plowing is at 90%. 5% complete





Fall River Secondary Cost Curve

K78CN03 Fall River Secondary Commuter Rail Cost Distribution



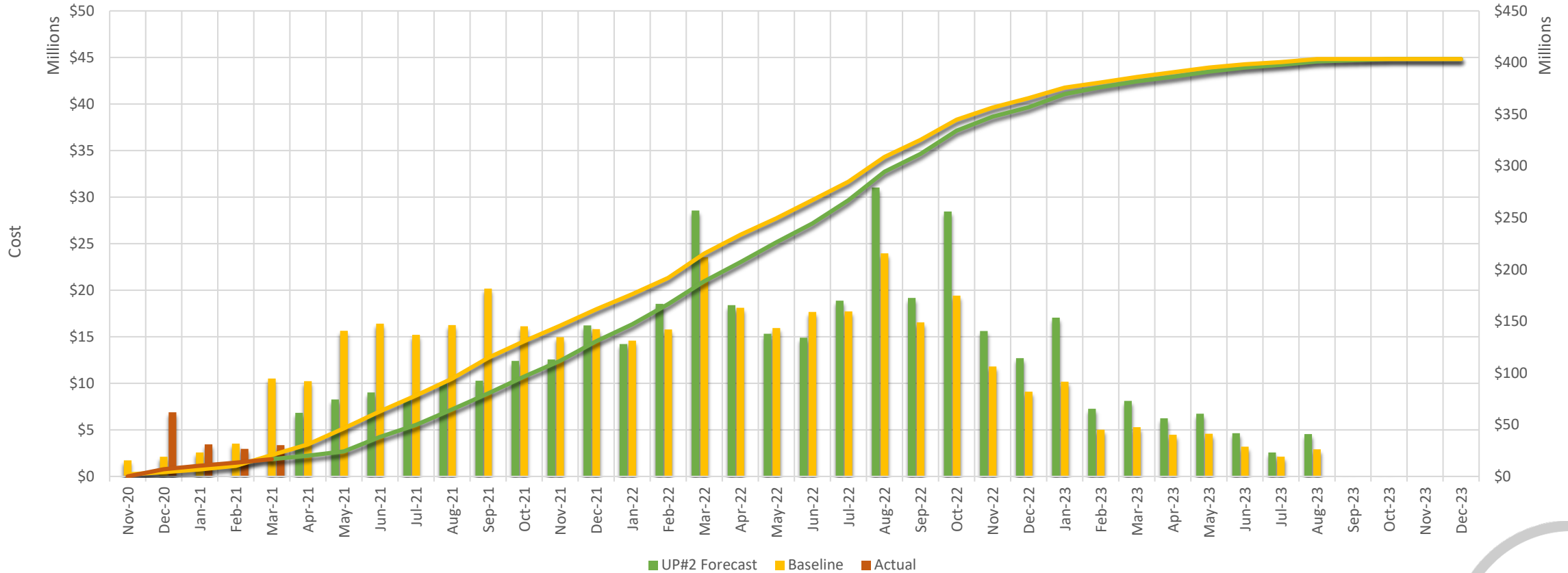
Based on approved baseline & avg. start
 Earned = work completed, Cash flow = completed & invoiced

*Data through 3/31/21
 Forecast below due to procurement



Middleborough & New Bedford Cost Curve

K78CN04 MS/NBML Commuter Rail Expansion Cost Distribution

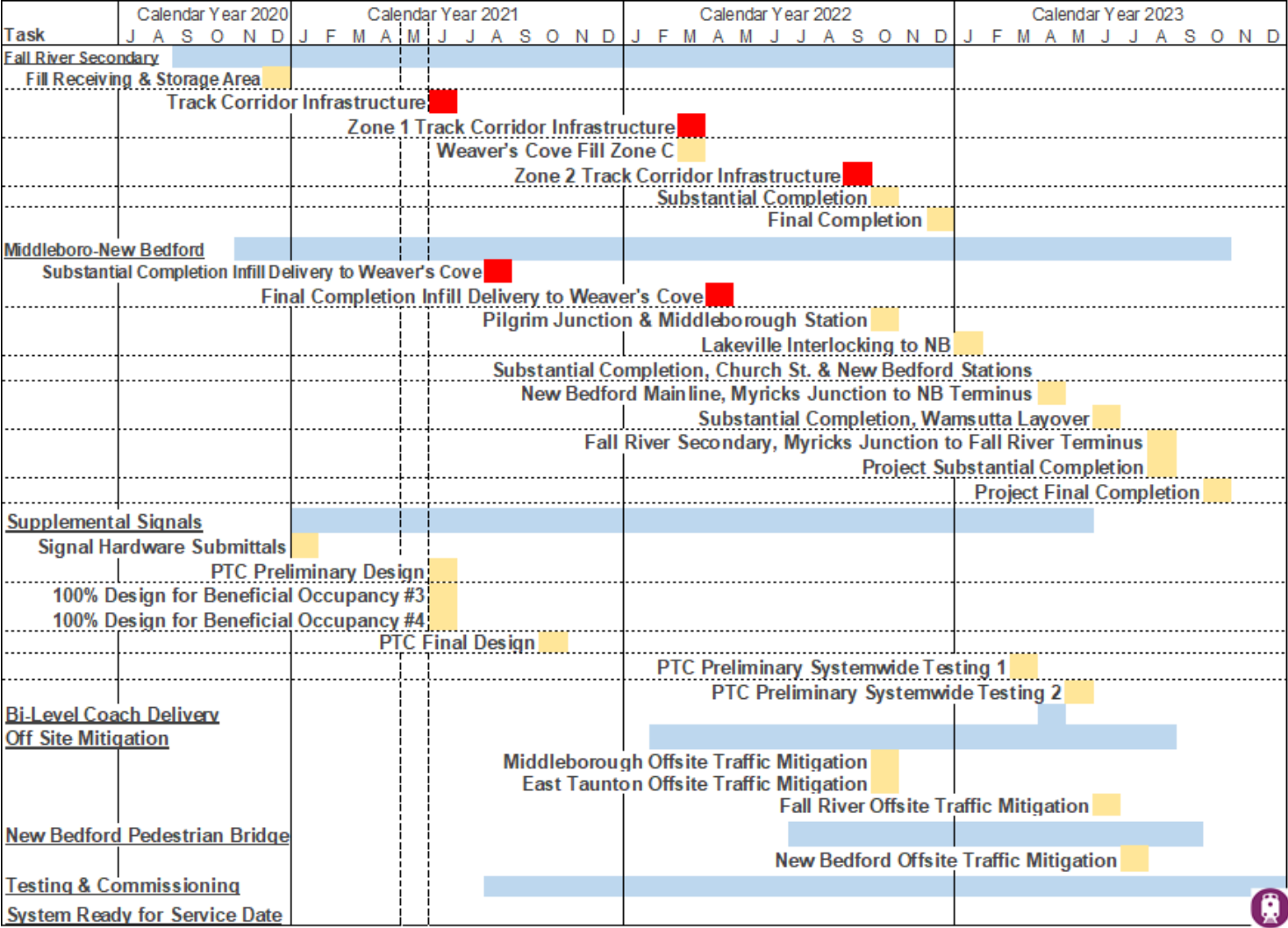


Based on approved baseline & avg. start
 Earned = work completed, Cash flow = completed & invoiced

*Data through 3/31/21
 Forecast below due to procurement



Contracts & Timeline – Construction



Blue: Contract NTP to Final Completion; Red: interface milestones; Yellow: Other milestone



12 Week Look Ahead

- Skanska/DW White will:
 - Demolish three existing bridges and install three new bridges at the locations of Assonet Bridge, Collins and Pearce Streets.
 - Replace 11,000 linear feet of track along the Right-of-Way
 - Replace three turnouts (one at the south end of Freetown Station and two at Weaver's Cove)
 - Install one culvert
- South Coast Rail Constructors will:
 - Install underground utilities at East Taunton and Middleborough stations
 - Install three miles of track
 - Install two crossovers
 - Install three turnouts
 - Install 2,000 linear feet of sheet pile walls
 - Reconstruct one grade crossing
 - Continue station foundation work
 - Replace three culverts
 - 30,000 yards of soil mining
 - Finalize tree clearing along Right-of-Way



Top: Laying track at Copicut Road, Freetown; Bottom: heavy equipment at Collins Street Bridge



Design

- Designer is progressing with design and permitting for two packages:
 - Traffic mitigation work in Middleborough, Taunton, and Fall River (design completion 2021 CYQ3)
 - New Bedford Pedestrian Bridge and traffic mitigation (design completion 2022 CYQ1)
- Traffic Mitigation in Middleborough, Taunton and Fall River includes:
 - Middleborough – Interchange modification and FHWA approval
 - Taunton – coordination with Route 24/140 Interchange
 - Fall River – coordination with Route 79 Corridor Improvements
- New Bedford Pedestrian Bridge and traffic mitigation includes:
 - Progressing to 30% design submittals
 - Vertical circulation at station end via elevators
 - MBTA-SCR informing Route 18 Corridor Improvement



South Coast Rail Project Website: www.mass.gov/southcoastrail



Fall River Depot – general view looking south



Cook Forest Products processing cleared tree material



Hub Foundation Soldier piles at Wall S



Pictures



Clark Street Bridge – looking south to Collins Street



Heavy equipment work at Fall River Depot

Appendix



Contracts & Timeline – Early Work

Blue: Contract NTP to Final Completion; Tan: Revised Schedule

Task	Calendar Year 2019												Calendar Year 2020												Calendar Year 2021											
	M	J	J	A	S	O	N	D	J	F	M	A	M	J	J	A	S	O	N	D	J	F	M	A	M	J	J	A	S	O	N	D				
Early Action Culverts (initial/revised sched)	[Blue bar]												[Blue bar]												[Tan bar]											
Early Action 4 Bridges (initial/revised sched)	[Tan bar]												[Blue bar]												[Tan bar]											
Early Building Demolition	[Tan bar]												[Tan bar]												[Blue bar]											
Special Trackwork (initial/revised sched)	[Blue bar]												[Blue bar]												[Tan bar]											



Construction Contracts

Updated, May, 2021

Contract	Contractor	Estimate at Completion	Spending thru May 2020	Percentage Spent	Percentage Complete
46 Culverts*	JF White	\$ 19,593,756	\$ 18,103,737	92%	95%
4 Bridge	JF White	\$ 23,756,351	\$ 23,529,634	99%	99%
Demolition	DW White	\$ 1,253,070	\$ 1,242,991	99%	99%
Fall River Secondary	Skanska/DW White	\$ 158,975,000	\$ 23,452,899	15%	20%
MS/NBL/Systems	SCR Constructors	\$ 403,470,002	\$ 13,003,752	3%	5%
DOT Rt 24 Bridge	TBD	\$ 27,200,000	\$ -		
New Bedford Pedestrian Bridge	TBD	\$ 8,577,969	\$ -		
Traffic Mitigation	TBD	\$ 7,797,004	\$ -		
Street Paving & Signage	TBD	\$ 352,500	\$ -		
Total		\$ 650,975,652	\$ 79,333,013		

*includes 1.4M spent prior to FY20

Spending on Fall River and NB continues to ramp up. Spending for FR and NB includes work completed through the month of March.

South Coast Rail Authorized Funds & Spending

		Total	MBTA	MassDOT
Prior Years	FY19/20	\$ 174.1	\$ 63.5	\$ 110.6
Current Year	FY21	\$ 134.4	\$ 116.1	\$ 18.3
	FY22	\$ 300.5	\$ 293.7	\$ 6.8
	FY23	\$ 325.9	\$ 319.1	\$ 6.8
Future Years	FY24	\$ 131.3	\$ 124.5	\$ 6.8
	FY25	\$ 40.1	\$ 33.3	\$ 6.8
	FY26	\$ 36.2	\$ 36.2	\$ -
	Total	\$ 1,142.6	\$ 986.4	\$ 156.2

MBTA numbers have been updated to reflect most recent cash flow estimates. MBTA went from FY21 projection of \$120m to \$116m due to reduction of anticipated coach payments (-\$2.7M) and reflow of admin costs (-\$1m).

Updated, May. 2021



South Coast Rail Signals/PTC/Communication (Draft)

Scope:

- Signals
- Communication and PTC
- Rail Activation Plan & Testing
- Milestone – PTC Preliminary Design Scheduled June 27, 2021

Budget:

- Signal, Communication and PTC for both the Fall River and the MB/NB Line are within the contract awarded to SCR Constructors (Middlesex/Tudor Perini). Sub-Contractor: Fischbach and Moore

Activities Underway:

- Preliminary signal design approved and Final Design on schedule next contract milestone – PTC Preliminary Design Scheduled June 27, 2021
- Cable Plow complete the installation of the three inner ducts on the Middleborough Secondary/New Bedford Main Line that will be used for the fiber optic cable
- Signal Houses for Pilgrim, Cape and Lake interlockings are ordered
- Reviewing the 100% design submittal for Pilgrim, Cape and Lake interlockings

Rail Activation Plan:

- Will verify system readiness for revenue service operation and compliance with contract requirements by conducting a systematic series of tests and drills.
- Will provide a framework for identifying the rail activation organization and defining roles and responsibilities for transitioning into revenue service



Coach Procurement & Locomotive Overhaul (Draft)

Coach Procurement:

- SCR 16 bi-level coaches - Hyundai Rotem
- SCR budget: \$69,037,292
- Car-body and sub-assemblies in process, material deliveries on schedule and truck frame assembly in process for pilot coaches
- Outfitting of first Pilot Coaches to began in February 2021. Pilot Coaches arriving Spring 2022

Locomotive Overhaul:

- Units are being overhauled to meet SCR fleet needs. Work involves removal and rebuild of all components, painting and body overhaul
- New systems include: 26L pneumatic braking system, piping and air tanks, QES III control, LED lighting components, switching steps, and rear track receiver bars and lights

PTC Installation – Mass Coastal Locomotives:

- MBTA to enter agreement with Mass Coastal to install PTC equipment on up to 6 locomotives
- AECOM to develop scope, specifications and contract development
- SCR Budget: \$3,000,000
- Allows freight line to operate on PTC equipped lines

Freight train changes to accommodate passenger trains:

- SCR will be converting existing siding into passenger track
- MBTA to add two tracks in Middleborough Freight Yard, for use of freight lines, including CSX

